

# Hammersmith Quilters Guild Newsletter



[www.hqgsaugus.org](http://www.hqgsaugus.org)

February 2024

## February 7, 2024 Meeting

**Show & Tell:** We will have Show & Tell in February.

**Free Table:** There will not be a free table at the February meeting.

**Creative Quilt Works:** The February Creative Quilt Works Project is a mug rug. See instructions in the Creative Quilt Works section of the newsletter for a link to download the paper foundation pattern and template for the heart. Attached at the end of this newsletter is a printout for reference but you should download the pattern from the link so that the measurements are correct.

**Fat Quarter (FQ) Drawing:** Bring a fat quarter in the designated color or theme. For each FQ you bring, your name goes into a drawing. You could win a whole bundle of fat quarters! The theme for February is **dots**. Remember: a fat quarter of fabric measures 18" x 22".

**3/\$1 Raffle:** Buy 3 tickets for \$1 and you are entered into a raffle for notions or other quilting things. The more tickets you buy, the more chances to win!

**Name Badge:** Wear your Guild name badge and enter a drawing for a prize. This is to encourage everyone to wear their name badge so we get to know who you are! New members received a printout of the directions when you joined as part of your tote bag welcome pack; the directions can also be found on our website [www.hqgsaugus.org](http://www.hqgsaugus.org) under Member Information.

**New One-Time Raffle:** At a previous quilt show, Dottie was the winner of a Blue and White Raffle Quilt. Dottie's husband, Roger, donated the quilt back to the Guild and the Guild will be selling raffle tickets at the February meeting and the drawing will take place at the February meeting.

All drawings and raffles are optional; you do not need to participate at all, or you can pick the ones that interest you!

## President's Message: Nancy Sandreuter

Dear Guild Members:

We kicked off 2024 with a wonderful program with a visit from the New American Association of Massachusetts (NAAM). The program is based in Lynn and their Director brought Afghan women who shared their hand embroidery and sewing skills. Our Guild answered the call and donated a huge stash of supplies for them. Thank you for everything you brought to the meeting and a big thank you to Gretchen and Margie who "discovered" this group at a fair, and to Joyce for arranging this program.

Next month, Joyce is planning yet another fun meeting, bringing back our Auction! Instructions will be emailed to everyone and are also included in this newsletter. So check your stash again, bring something wonderful to put into the auction, and bring your cash, checks and Venmo for your purchases.

For our March meeting, Joyce is arranging a workshop with a program to follow at the meeting. She will have all the information for you at the February general meeting.

A reminder to use our website for general information, and to check for any updates on the Guild Calendar. Also, share your news and projects on our Facebook page, we love seeing our members' information and projects. Our Getaway is fast approaching. We still have room for a few more quilters, so check with friends who might want to join us and put them in touch with Cindy Nile. This event will be a fun time for all.

See you in February!

Nancy Sandreuter, President

***"Remember you haven't had enough coffee until you can thread your sewing machine while it's running."***

## Treasurer's Report: Sheila Darcy

The bank balance as of January 12, 2024 is [REDACTED] That includes approximately [REDACTED] in payments received for the Getaway and not yet paid to the hotel.

When writing a check to the Guild, please make a note in the memo space of your check so we know what it is for and can track the payment. That way we can keep the checks in categories making it easier for me to find your check if necessary. When you're submitting receipts for reimbursement, please put them in an envelope and write on the envelope what each receipt is for so the expenses can be tracked as well.

## Membership & Web Administration: Rosalene Graham

We currently have 90 paid members. The cost for guests attending the February meeting is \$5.

## Program Committee: Joyce Rodenhiser

Leslie Hansard said so many nice things about our Guild!! She was taken aback by your generosity and we echo her thank you's! You have helped these women so much in so many ways by your thoughtfulness.

**In February** we will have an Auction. Nancy has agreed to be the Auctioneer and Barbara is busy making auction numbers on paper plates!! Bring your cash, checks or Venmo for your purchases so you can have fun bidding!

Here are the guidelines for the Auction:

1. Please put anything you wish to bring to the auction into a clear plastic bag. You can bring more than one bag of items. Also include a list of the items that are in each bag on an index card attached to the bag(s). (Suggestion – for anyone who uses drycleaning services, the bag you get back from the cleaners will work - just secure both ends!)
2. When you sign in at the Senior Center, you will receive a paper plate with your bidding number.
3. Please take your donation bag(s) to a committee member at the stage area so that your bags can be registered.
4. The bags will be numbered and placed across the front of the stage so that everyone can look at everything before the auction begins and know which bags they would like to bid on.
5. We will have items from Dottie's stash in the auction as well (she keeps on giving to us).

**March Meeting Update:** On the member survey back in September, a large number of you asked for art quilts and we listened. On March 6<sup>th</sup> we'll have a workshop with Penny Young on ART QUILTS. The workshop will be from 3:30 pm to approximately 5:30 pm at the Senior Center, we'll have time for a bite to eat, and then Penny will be the featured speaker at the Guild Meeting at 7:00 pm.

The March 6<sup>th</sup> afternoon workshop is limited to 20 people and the cost is only \$22.50 per person. We will be taking sign ups and payments at the February meeting and providing supply lists. Just ask anyone who knows Penny and they will rave!

## **Charity Donations Committee: Gretchen Berkowitch & Louise Nazzaro**

Thank you to everyone who donated quilts and pillowcases in January.

Please note it is a requirement for guild members to make a juvenile pillowcase and a baby to lap size quilt per year which will be donated to various charities. We also make snowman themed pillowcases used for our holiday donation to DCF and Home for Little Wanderers. Quilts and snowman themed pillowcases are due at the November meeting.

## **Member-at-Large: Paula Fallon**

As the Member-at-Large, I am here to help with any member questions or comments. Please don't hesitate to contact me.

## **Sunshine and Shadow Committee: Brenda Lane**

If you know of anyone who needs a little cheering up for whatever reason, please let me know. I'd be happy to send a card with well wishes. You can contact me at [brendaglane14@gmail.com](mailto:brendaglane14@gmail.com).

## **Hospitality Committee: Mary Ann Andree and Ann Kelly-Maguire**

These members have signed up to bring refreshments to the February meeting. Don't forget to take home your leftovers/platters at the end of the meeting!

Gretchen Berkowitch  
Molly Conlin  
Kathy Connors

Carole d'Entremont  
Janice Meade  
Maureen Ward

## **Creative Quilt Works & Block of the Month: Judy Massakowski and Linda Reppucci**

The Creative Quilt Works project for February is the Heart Glow Mug Rug by KLee 2 Strings. This website will take you to the free pattern: [https://media.rainpos.com/4959/heart\\_glow\\_mat.pdf](https://media.rainpos.com/4959/heart_glow_mat.pdf)

Also, see attached instructions and sample photos for the February Creative Quilt Works project at the end of the newsletter.

## **Ruler Librarian: Rosalene Graham**

The fifth and last Tucker ruler in our ruler library is the Quilters Magic Wand, # 89. According to Deb Tucker's web site it is an accurate ½ in wide rule. It has an etched 1/4" line down the middle. It is used when "high precision" is needed. A video demonstrating its use is at <https://www.youtube.com/watch?v=xyC8OXBa4eE&t=11s>.

Thank you to Betty Snell-Fraser and Ruth Ashton for their donations to the ruler library. Their ruler donations are: #92 and #93 Shape Cut Rulers by June Taylor; #94 Set P, Perfect Patchwork Templates for a 27 5/8 Feathers Star by Marti Michel; #95 the Pineapple Tool by Gyleen Fitzgerald; #96 Set A, Perfect Patchwork Templates, the 3in Square Basic Set by Marti Michel; #97 Easy Angle by EZ Quilting; #98 Omnigrd Right Angle Ruler; and #99 Easy Center Square by EZ Quilting. Betty also donated several stencils for marking your quilts for quilting: #218 Cable Border with Corner; #219 Leaves; #220 Mini Border with Corner; and #221 Dritz Feather Semi-circle-8".

If you wish to check out a ruler, contact Rosie Graham at [hammersmithqgmembershipchair@gmail.com](mailto:hammersmithqgmembershipchair@gmail.com) with the ruler number and when you need it.

### **Guild Property: Rosalene Graham**

We are asking all people who may be storing physical property of the Guild to let us know what they have stored. We think we may have lost the knowledge of who has what property of the Guild. When we took an inventory of the Quilt Show items, we realized that there were some non-quilt show items that people may have stored in their homes. If you have any items, please let Rosie Graham at [hammersmithqgmembershipchair@gmail.com](mailto:hammersmithqgmembershipchair@gmail.com) know what they are. We are not going to collect them, we just need to know who has what and where. This doesn't count consumables that we use during the year like paper plates, etc. Thank you for your help!

### **Getaway/Retreat: Cindy Nile**

As is customary at the Guild's Getaway, there will be a Mystery Quilt organized by Kristin Callahan. An email containing the fabric requirements will be sent to everyone who signed up for the Getaway.

As you plan your projects for the Getaway, don't forget to contact Rosie if you would like to sign out a ruler or two to use at the Getaway.

### **Miscellaneous: Cindy Nile**

Did you make the Bonnie Hunter free mystery quilt, Indigo Way Mystery? If so, bring it to the February meeting for Show and Tell, even if it is an unfinished top.

The 2024 February Fabric Frenzy will be held at the Searles Historic School & Chapel, 3 Chapel Road, Windham, NH on the following dates:

Thursday, February 22<sup>nd</sup> from 9am – 5pm

Friday, February 23<sup>rd</sup> from 9am-5pm

Saturday, February 24<sup>th</sup> from 9am-3pm

The February Fabric Frenzy vendors are Bits 'n Pieces, Paradise Quilting & Gift Shop, Patches Quilt Loft & Embroidery, Pine Tree Quilts and Purrfect Pastimes. According to their advertisement "Rain, Sleet, Snow, or Hail, we will be there, never fail!!"

Don't forget to check the Guild website periodically for any updates on the Guild Calendar. All updates will be made to the calendar on the website.

Klez 2 Strings

## Heart Glow Mug Rug

Finished size: 7" x 9"

### Materials for One Mug Rug:

- Fabric scraps for paper foundation piecing and heart (approximately ¼ yard total)
- 9" x 11" piece of backing fabric
- 9" x 11" piece of batting
- 1/8 yard of fabric for binding
- 1 yard of ½" rick-rack trim
- Thread
- Fusible web for the heart

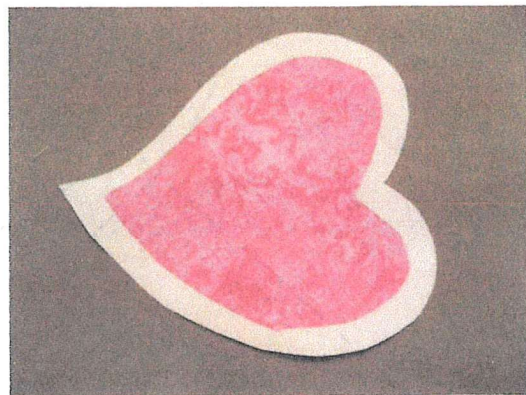


### Instructions:

1. Download the paper foundation pattern & the template for the heart. Set your printer at 100% or whatever setting is needed so that your printer will add no margins to the file. Print both pages.

2. Use a paper foundation piecing method to sew the two sections of the background pattern with the scraps of fabric you have chosen. (The center heart-shaped area should not be filled, as it will be cut away to reduce volume after the heart is stitched in place.) Trim each section and sew the two together. Remove the paper and set aside.

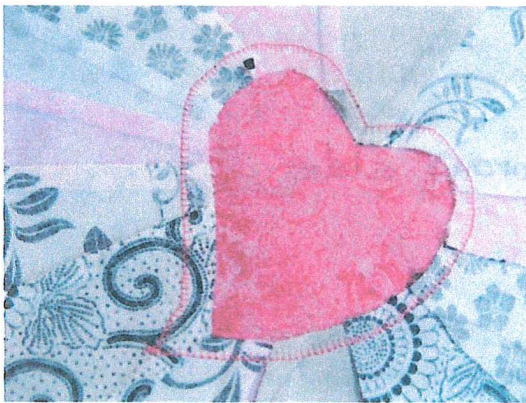
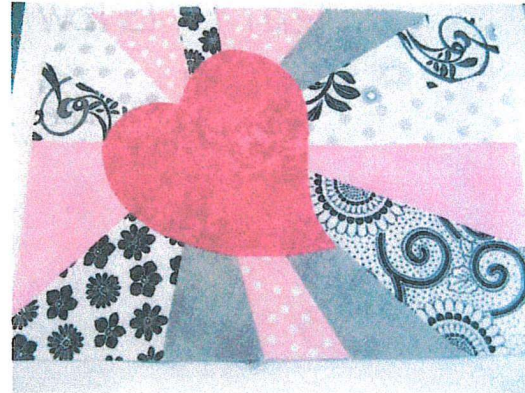
3. Trace the heart template onto the paper side of the fusible web. Cut out the center of the heart so that the fusible web around the edge of the heart is about 3/8" wide. Place the fusible web onto the heart fabric and iron in place. Trim around the outside of the heart.





## Class 2 Strings

4. Fuse the heart to the pieced background using the guidelines on the paper foundation pattern for placement.



5. Stitch the heart in place.

6. Cut the excess background fabric back to about  $\frac{1}{4}$ " from the stitching around the heart.

7. Layer the mug rug top, batting, and backing together and quilt.

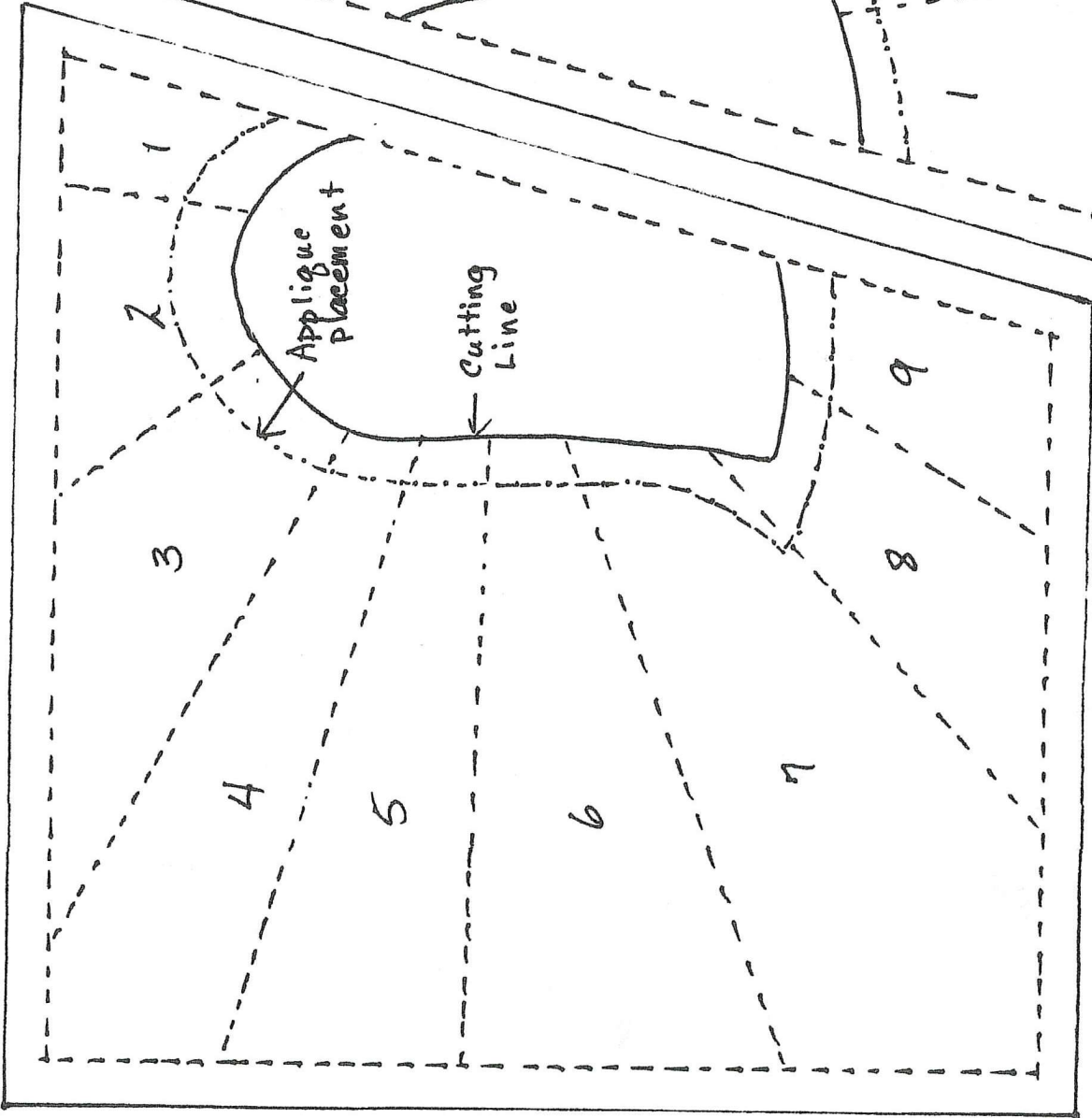
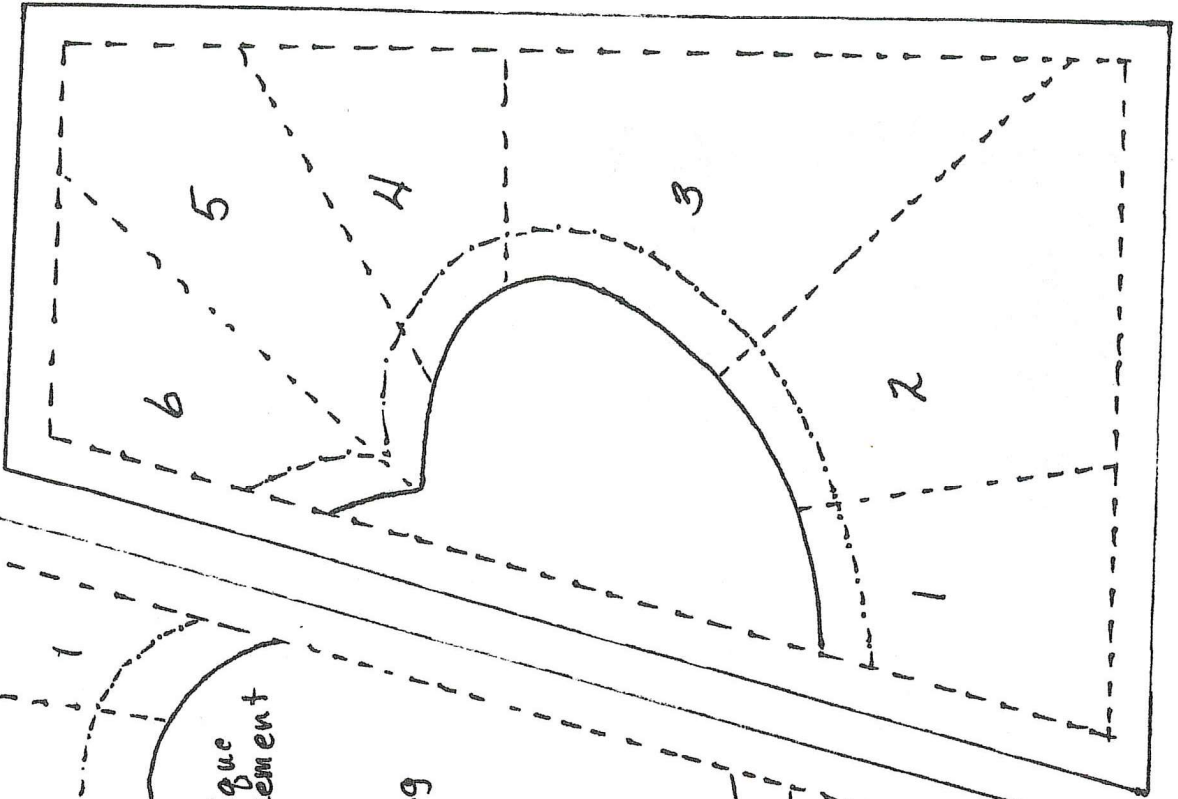
8. Trim the excess batting and backing away and square up the mug rug.

9. Line the rick-rack up on the edge of the mug rug. Stitch exactly  $\frac{1}{4}$ " from the edge and your stitching will fall exactly along the center of the rick-rack.



10. Attach the binding.

Stitch on dotted lines.  
Cut on solid lines.



Heart Glow Mug Rug  
by klee 2 strings



Heart Glow Mug Rug  
by  
Klee 2strings

Heart template - wrong side

