

# Hammersmith Quilters Guild Newsletter



[www.hqgsaugus.org](http://www.hqgsaugus.org)

December 2024

## December 4, 2024 Meeting

**Show & Tell:** There will be Show & Tell in December.

**Free Table:** There will be a free table at the December meeting.

**Creative Quilt Works:** Fibonacci Quilts are due at the January meeting. See more details in the Creative Quilt Works section below.

**Fat Quarter (FQ) Drawing:** Bring a fat quarter in the designated color or theme. For each FQ you bring, your name goes into a drawing. You could win a whole bunch of fat quarters! The theme for December is White-on-White. Remember: a fat quarter of fabric measures 18" x 22".

**3/\$1 Raffle:** Buy 3 tickets for \$1 and you are entered into a raffle for notions or other quilting things. The more tickets you buy, the more chances to win!

**Name Badge:** Wear your Guild name badge and enter a drawing for a prize. This is to encourage everyone to wear their name badge, so we get to know who you are! New members received a printout of the directions when you joined as part of your tote bag welcome pack; the directions can also be found on our website [www.hqgsaugus.org](http://www.hqgsaugus.org) under Member Information.

**Holiday Raffle Quilt:** We will be selling tickets for the holiday quilt and the drawing will be at the December meeting. Just \$1 per ticket or \$5 for 6 tickets!

All drawings and raffles are optional; you do not need to participate at all, or you can pick the ones that interest you!

## President's Message: Nancy Sandreuter

Dear Guild Members:

Is it me, or has 2024 flown by? As I write this message, we are about to enter a very busy season. Thank you for attending our meetings this year, supporting our speaker events, and our charity committee with your pillowcases and beautiful quilts. Soon Gretchen and her committee will be stuffing your pillowcases with your quilts and toys. Proceeds from the Christmas Quilt raffle will be donated to the church for allowing us to use their space. The winner will be drawn at the December meeting.

When we meet for our Holiday Potluck, we will be saying goodbye to 2024 and looking ahead to 2025. Joyce has done a fabulous job scheduling speakers, activities and workshops for you. Please refer to our Newsletters and Refrigerator Calendar for these events and more. Space is limited in the workshops so sign up early.

Finally, when you check in for the December meeting, we will have the donation basket for a gift to the "American Cancer Society Relay for Life" in Sheila Darcy's memory. I'll announce the amount we will donate that night.

Be safe this holiday season. Enjoy giving and remember to support those less fortunate than you, and please remember the children who are food challenged. At the December meeting, we will be collecting donations for the Saugus Food Pantry. They need baby food, formula and non-perishable food items.

See you soon,

Nancy Sandreuter, President



## Vice President's Message: Kirsten Swenson

We are gearing up for the 2025 Quilt Shop, Homespun Harvest 2025!

Best,

Kirsten Swenson, Vice President

## Treasurer's Report: Carol Healy

The bank balance as of November 20, 2024, is \$ [REDACTED] (this includes the deposits for the Retreat).

When writing a check to the Guild, please make a note in the memo space of your check so we know what it is for and can track the payment. That way we can keep the checks in categories, making it easier to find your check if necessary. When you're submitting receipts for reimbursement, please put them in an envelope and write on the envelope what each receipt is for so the expenses can be tracked as well.

## **Membership & Web Administration: Rosalene Graham**

There is a \$5 guest fee for the December meeting.

The guild has 86 members. Because I inadvertently omitted a member from the membership list email sent to guild members in October, I sent out an updated list in November. The updated list is also in the members only portion of our website.

## **Program Committee: Joyce Rodenhiser**

The program for December is one of Guild tradition! We will have:

Our annual Potluck Supper (please sign up with Mary Ann Andree or on SignUpGenius, please)

A story from Mr. and Mrs. Wright with a gift swap at each table. Please bring a gift valued at \$10 to \$15 to pass left, right and across your table.

A bit of business and Show & Tell.

A “champagne” toast.

A sign-up for a January 8<sup>th</sup> afternoon workshop with Gail Dwyer making one of her famous bags. The first 11 people to sign up will be in – cost to be determined soon.

We will be collecting donations for the Saugus Food Pantry. They need baby food, formula and non-perishable food items

Respectfully submitted,  
Joyce Rodenhiser

## **Charity Donations Committee: Gretchen Berkowitch & Louise Nazzaro**

The donation committee would like to thank members who made donation quilts and pillowcases. You outdid yourselves! Over the year 107 quilts, 106 snowman pillowcases and 103 novelty pillowcases were made! Many children will be very happy. Since we purchase goods for 100 children split between the Department of Children and Families and the Home for Little Wanderers, this allows us to extend to other charities as well. The extra quilts will be donated to the MassGeneral-Brigham's pediatric cancer center, and pillowcases will be donated to Allison's closet, a nonprofit started by Paula Fallon's daughter, Michelle who live in AZ, and a friend of Ellen O'Sullivan gives quilts and pillowcases to children of the Massachusetts National Guard who are being deployed. The deployed parent is given a star and when they Facetime they bond over the gifts they receive at the deployment ceremony.

We will be stuffing quilts the day after Thanksgiving at the Blessed Sacrament Church, 14 Summer Street in Saugus at 10AM. Anyone interested in helping out, please email me at gabrnrc@yahoo.com.

Proceeds from the Christmas raffle quilt will go to the church for their generosity for allowing us to use the church basement to stuff the pillowcases. The Christmas raffle quilt drawing will be at the December meeting, so there is still time to purchase your ticket(s). \$1 each or 6 tickets for \$5.

A reminder quilts and pillowcases will not be collected at the December meeting. This is because we will be collecting donations for the Saugus Food Pantry. They need baby food, formula and non-perishable food items

For newer members, charity work is part of the Guild's mission. As a member of the Guild, we ask that each member make a pillowcase and children's quilt. During the holidays, we stuff the snowmen pillowcases with a quilt made by the membership and then the Guild purchases games, books, toys, hygiene products, hats and gloves for children and teens to add as well. Pillowcases are donated to the Department of Children and Families and to the Home for Little Wanderers, North Shore Division.

For reference, here are approximate measurements for donation quilts:

Baby Quilt: 30" x 40"

Crib: 36" x 52"

Throw (lap): 55" x 65"

### **Member-at-Large: Paula Fallon**

As the Member-at-Large, I am here to help with any member questions or comments. Please don't hesitate to contact me.

I want to thank everyone, especially the vendors, that participated in the Holiday Members Vending night. It was a great success and a lot of fun. There were plenty of homemade gifts to purchase and some wonderful snacks. I look forward to doing this again in the future. Thank you!

### **Sunshine and Shadow Committee: Gail Dwyer**

If you know of anyone who needs a little cheering up for whatever reason, please let me know. I'd be happy to send a card with well wishes. You can contact me at [gaild516@aol.com](mailto:gaild516@aol.com) or via text at 617-455-5158.

### **Hospitality Committee: Mary Ann Andree and Ann Kelly-Maguire**

We need more people to sign up for the December Potluck Supper. Please contact Mary Ann Andree or sign up using SignUpGenius as soon as possible. We need more main dishes. If you need help with SignUpGenius, please do not hesitate to contact Rosie Graham at [hammersmithqgmembershipchair@gmail.com](mailto:hammersmithqgmembershipchair@gmail.com).

## Creative Quilt Works & Block of the Month: Judy Massakowski and Linda Reppucci

We are still working on the latest Creative Quilt Works project, the Fibonacci Quilt, that was demonstrated at the October meeting.

You can make it with the four 30 inch x 30 inch pieces of fabric or you can make it scrappy.

You can make each strip a different color, make each strip up of several different fabrics, or design your own.

The quilts will be presented at the January meeting (so you can concentrate on holiday projects). It will be fun to see how creative everyone can be.

And don't forget, you can also use the quilts as donation quilts. Please see the instructions attached at the end of this newsletter.

## Ruler Librarian: Rosalene Graham

Ever need a 60-degree ruler? The ruler library has several options for you ranging from 6 inches to 12 inches. Five are from Sara Nephew: the clear view 60 degree ruler (#11) that cuts from 1 inch to 6 inches; clear view 60 degree triangle 8" (#1037) that cuts 1 inch to 8 inches; 10" 60 degree ruler (#79 and #87) that cuts 1 inch to 10 inches; and the the 60 degree - 120 degree Super 60 (#52) that cuts from 1 inch to 8 inches plus has a 120 degree angle as well. The library also have the Fons and Porter 60 degree pyramid ruler (#54) that cuts from 1 inch to 6 inches and the Creative Grids 60 degree triangle 12" finished (#54) that cuts from one inch to 12.5 inches.

To check out a 60-degree ruler or any ruler from the Ruler Library, contact Rosie Graham at [hammersmithqgmembershipchair@gmail.com](mailto:hammersmithqgmembershipchair@gmail.com) with the ruler number and when you need it.

## Quilt Show 2025: Nancy Sandreuter, Kirsten Swenson and Gretchen Berkowitch (Co-Chairs)

SAVE THE DATE: November 8-9, 2025

We have started planning next year's quilt show. The show's theme is Homespun Harvest 2025. The dates are as follows: Set up day is Friday, November 7, 2025, and the show will be Saturday and Sunday, November 8 and 9, 2025.

**Paula Fallon** will be coordinating the cafe.

**Gail Dwyer and Beverly McGrath** will be coordinating the boutique.

**Carol Healey** will be working on advertising and promoting the show.

**Louise Nazzaro** will be collecting fat quarters from guild members. A fat quarter measures 18"x22". As you clean your stash, please think of the quilt show. We are traditionally able to collect enough fat quarters to make a penny sale basket and to use as favors for our guests.

**Ellen O'Sullivan** will be recruiting vendors to vend at the show. Sending them contracts and helping with set up. The area can accommodate 4 vendors.

**Joyce Rodenhiser and Louise Nazzaro** will be Penny Sale Basket Coordinator(s). They will be soliciting members to make themed baskets of their choosing. Tracking the baskets to prevent duplicates. Members will wrap their baskets and provide a list of the items that are inside the basket. Volunteers will help set up the room and there will be shift workers to help sell tickets. The tickets will be provided. On the day of set up the coordinators will be responsible for assigning each basket a number and coordinating a numbered gift bag to secure tickets.

**Kirsten Swenson and Carol Healy** will be Door Prize Coordinators. They will solicit donations from quilt shops and notion/fabric companies. You can be as creative as you want since not only quilters come to the show, for example asking local restaurants for gift certificates, local hair salons for gift certificates, etc. You will be responsible for writing a form letter and mailing or emailing the various businesses. Responsible for packing the gift bags and calling the door prize numbers every hour on the hour at the show. There will be runners to help with the drawings.

We need Volunteer Coordinator(s) for the quilt show as follows:

**\*\*\*\*Please note you will have guidance and support through the process. You may also ask other members to help with the tasks at hand. Just because you are the coordinator does not mean you are expected to do things by yourself. All coordinators are asked to attend quilt show committee meetings\*\*\*\***

**Volunteer Coordinator(s):** Rosie Graham will work with you to set up the volunteer categories on Sign Up Genius and the shifts needed to work. Responsibilities will be helping members sign up for their jobs through Sign Up Genius, making sure all shifts are covered, and checking people in each day of the quilt show.

**Our show depends on the work of the members. Please consider the Volunteer Coordinator position. It is a nice way to get to know your fellow guild members! 😊**

If you are interested in being a Coordinator and Quilt Show Committee Member, please contact Gretchen Berkowitch at [gabrncs@yahoo.com](mailto:gabrncs@yahoo.com).

This is a great time to think about the quilt(s) that you would like to exhibit in the show. With the dates set, we have great motivation to finish up a quilt project or two!

Thank you.

## **March 2025 Guild Retreat: Cindy Nile**

Thank you to everyone who signed up for the March Retreat! I will send each participant a reminder email in December to bring your final payment to the January meeting.

If you have any questions, I'm happy to answer them at [cindynile@verizon.net](mailto:cindynile@verizon.net).

## **Miscellaneous: Cindy Nile**

Looking for a quick but loved holiday gift idea: Pillowcases. They aren't just for kids or donations to the Guild. They make fabulous holiday gifts and are sure to be appreciated all year long! Plus, they are a great way to use up your stash!

Don't forget to check the Guild website periodically for any updates on the Guild Calendar. All updates will be made to the calendar on the website. Also check out the Guild-to-Guild information on the website.



# Fibonacci Quilt

## Pattern/Details:

This pattern is based on the Fibonacci Sequence, a simple formula that results in a natural progression of color.

Finished size: 48" x 48"

Making it for: Hammersmith Quilt Guild

## Supplies:

Four fabric squares 30"x30" ideally one very dark color, one very light color, and two medium colors

## Cutting instructions:

From each 30"x30" block cut the following:

1.75" strip x 30" *1.25*

3" strip x 30"

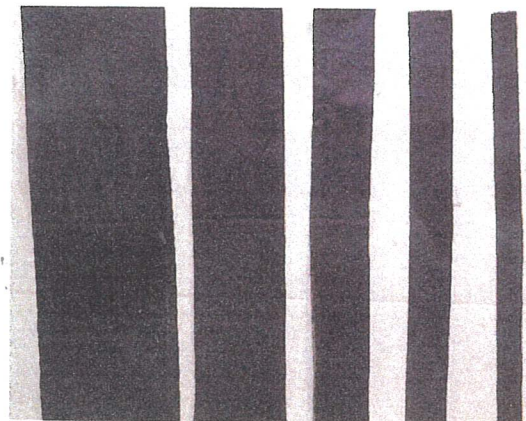
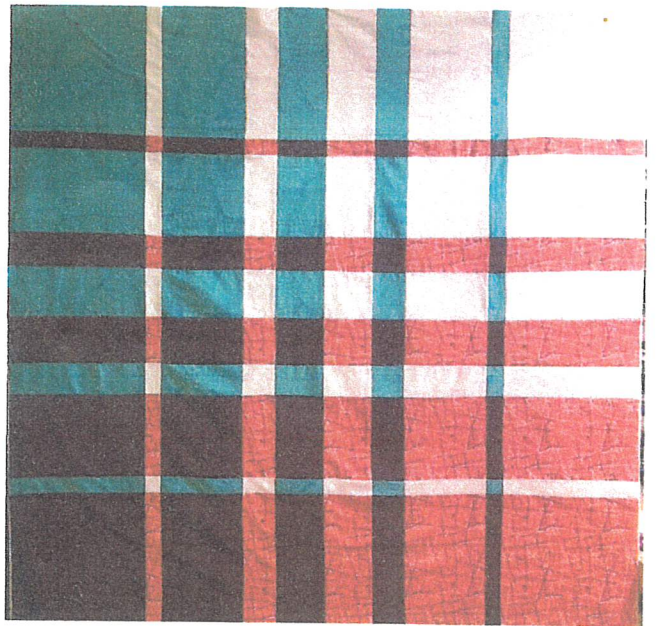
4.25" strip x 30"

6.75" strip x 30"

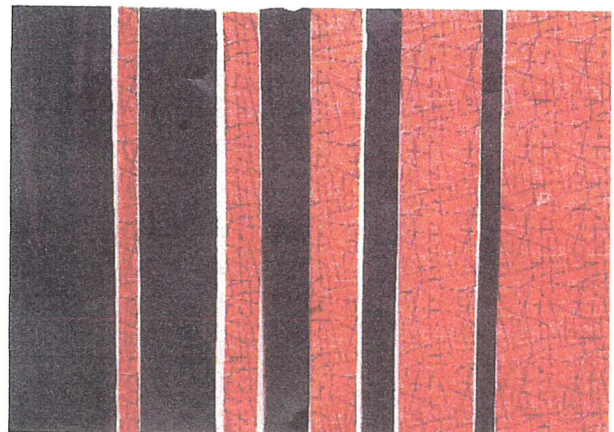
10.5" strip x 30"

## Steps to take:

1. Arrange the dark fabric strips from left to right, starting with the widest (10.5") strip and ending with the narrowest (1.75") strip; leave spaces in between them.



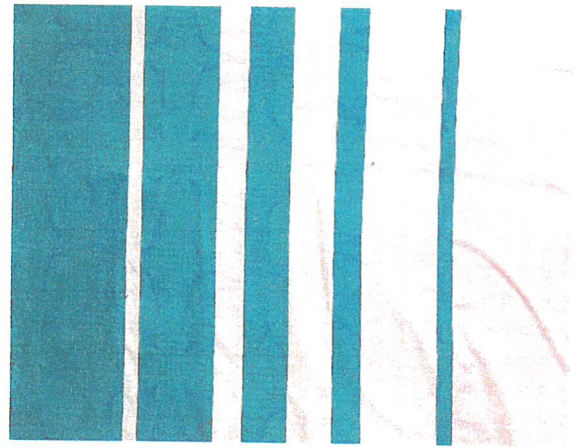
2. With one medium-colored, reverse the process: place the narrowest (1.75") strip in the first space between the first two dark strips; proceed placing increasingly wider strips between dark strips, ending with the widest (10.5") medium-colored strip at the end. Now, sew them all together.



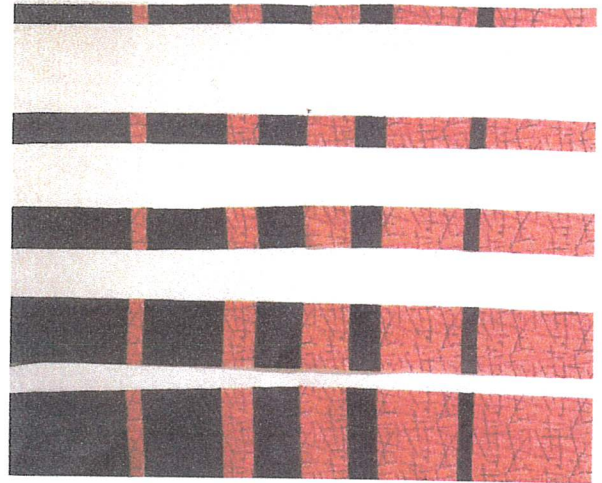
*10 1.675 3.454 3.675 1 10*



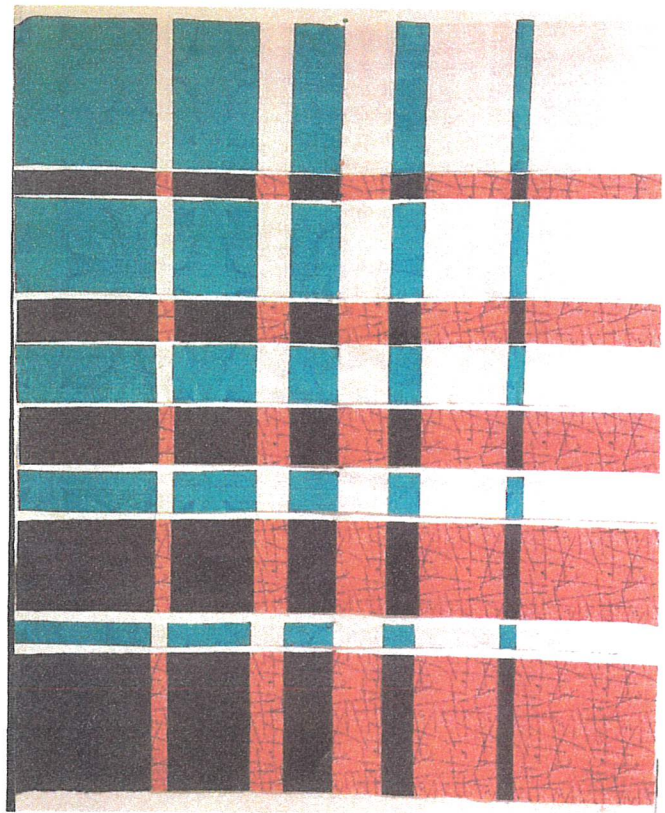
Repeat steps 1 through 3 with the other medium-colored and lightest fabrics. You're halfway home!



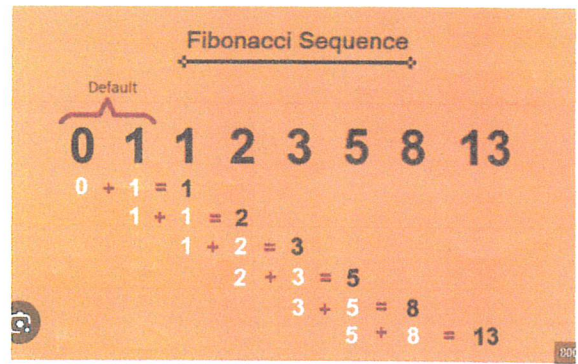
4. Trim one of the "selvedges" so it is at a 90-degree angle to the seams.
5. Turn both fabrics perpendicular and cut strips using the measurements at the beginning of the instructions.



6. Intersperse them using Steps 1 and 2.
7. Sew them all together. Your quilt top is done!







Leonardo Pisano Fibonacci, noted Italian mathematician - He introduced the Arabic numeral system and square roots to the western world.

