

Zakka Owl

By Alexandra Rasmussen

Materials: Owl pattern should measure at 4 ¼" (11cm) from top to bottom of body. You might need to make adjustments to your printer to achieve the correct size.

Small bits of contrasting fabric for owl body.
Thread to match
Stuffing
2 small shirt buttons
Yellow embroidery floss
Small bit of cardboard (owl bottom)
Pressing sheet
Light fusible web

Cut:



Cut pattern pieces including cardboard for the bottom of the owl; add seam allowances when cutting the fabric.

Size (height) of my pattern pieces: 7 and 10 cm

Sew Belly to Main Part, Seam "a"



Place belly piece on main part, side "a" of belly on edge "a" of main part, start at bottom and sew together, stopping before the tip of the belly part, leaving 0,5cm seam allowance for side "b".

Seam "b"



Repeat with seam "b".

Close Middle Seam

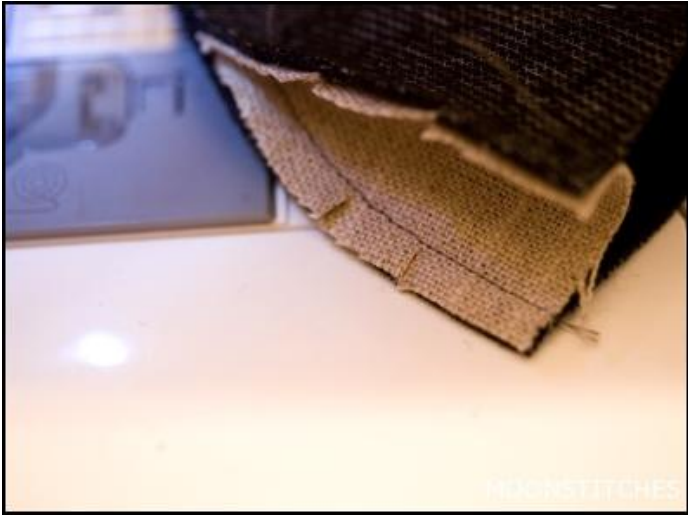


Sew middle seam, starting where seam "a" and "b" meet.



Belly attached to the main part of the owl's body.

Trimming



Trim the seams where curved.

Clipping



Clip tip close to stitching.

Turning



Turn inside out.

Prepare for Sewing Up



Stitch (by hand) along the bottom edge of the owl's body in order to prepare for sewing it up later.

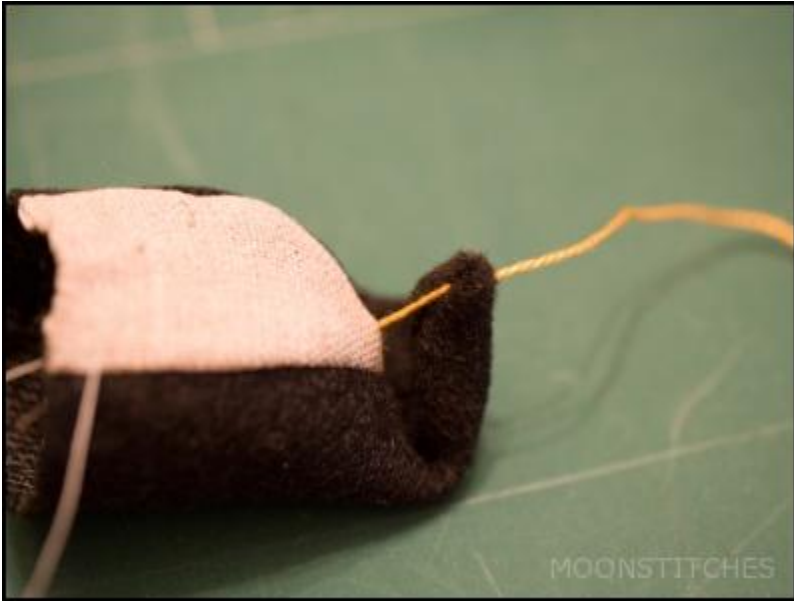
In case you're combining a rather thick fabric like wool with a thinner one like cotton or linen make sure to turn the seam allowances in direction of the thinner fabric.

Beak



Begin sewing the beak from inside the owl's body, secure floss with knot.

More Beak



Fold the tip down a bit, insert the needle and stitch what will become the owl's face into place.



Embroidering the beak...

Finished Beak



Secure floss inside of the body.

Stuffing



Fill your owl to desired firmness, use small amounts of filling at a time.

Sewing Up



Sew up the body.

Bottoms



I like having a bunch of prepared owl bottoms at home... you know, owls tend to come in swarms :)

The way I prefer them is a bit time consuming but once done they are very easy to attach.

First cut cardboard circles in desired size.

Place light fusible web on wrong side of fabric, cardboard circles on top (seam allowances!), cover with a pressing sheet and iron the cardboard circles onto the fabric.

Cut out bottoms and press seam allowance around the edges to the center of the circle.

Sewing

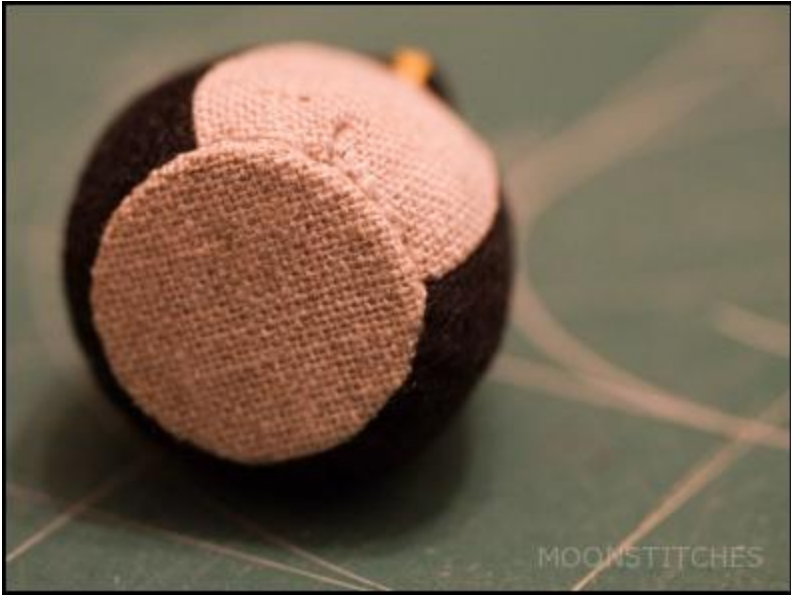


Attach bottom to body.

Secure the end of the thread under the bottom.

I like sewing with a color matching thread and always sew with double thread because it simply holds better.

Bottomed



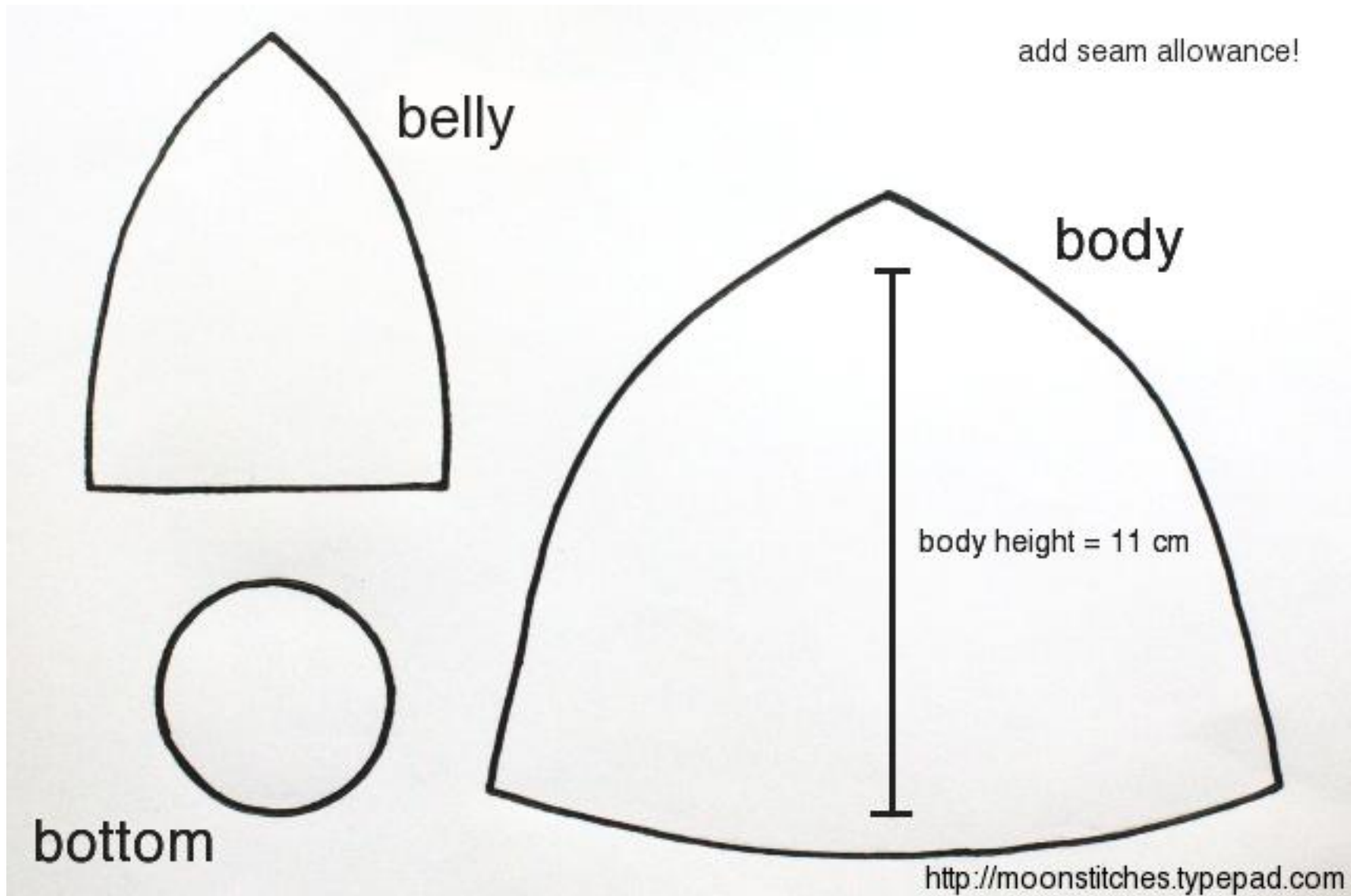
Eyes



Sewing on a pair of buttons will make your owl see.
That's it.

As I said, they come in swarms...





Owl body should measure from top to bottom at 4 ¼" (11 cm). You might need to make adjustments to your printer version to achieve the correct size

Pattern courtesy of Alexandra Rasmussen

Read more about Alex in her blog at <http://moonstitches.typepad.com/moonstitches/>

