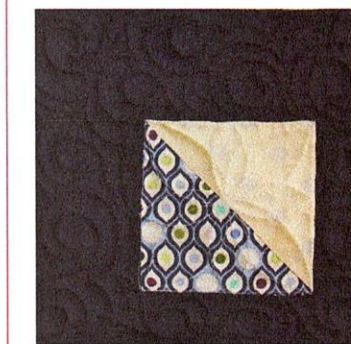
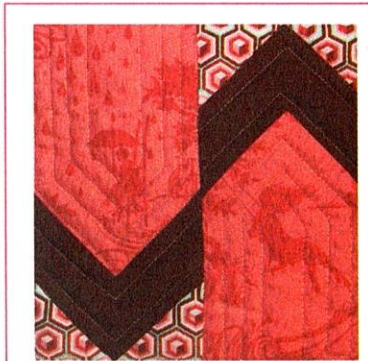
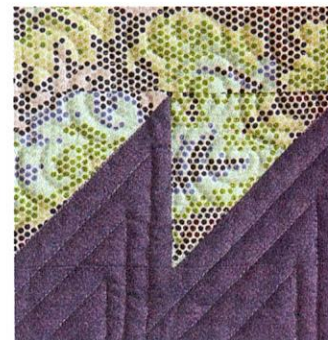
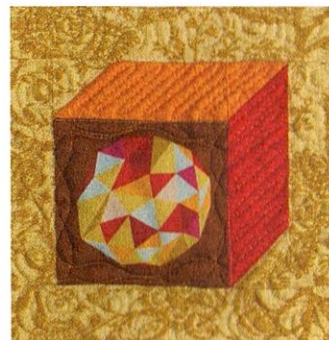
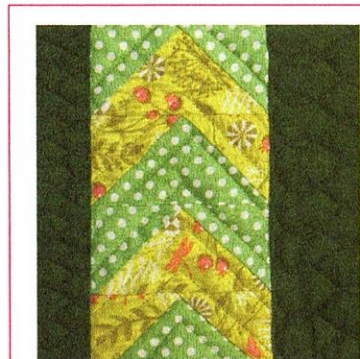


# Blocks 36–55: Triangles

The quickest way to add interest to a block is with a triangle. Triangles make pinwheels and sawtooth patterns, zigzags and chevrons among other things. The possibilities that a triangle brings to piecing are endless. This section attempts to explore a few of those possibilities.



Before You

**METHOD 1: Half**  
Any time you see the  
follow these instructions

This symbol will always  
pair of identical size  
different fabrics that  
to make one half size

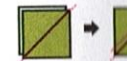
1. Draw a diagonal line from the upper right corner to the lower left corner on the wrong side of your squares.

2. Place your two squares together and sew

3. Trim away the excess fabric (6mm) seam allowance on the stitched line.

4. Press your seam

5. Repeat until you have the number of square triangles that symbol have



**METHOD 1 block**  
46, 47, 48, 50, 52